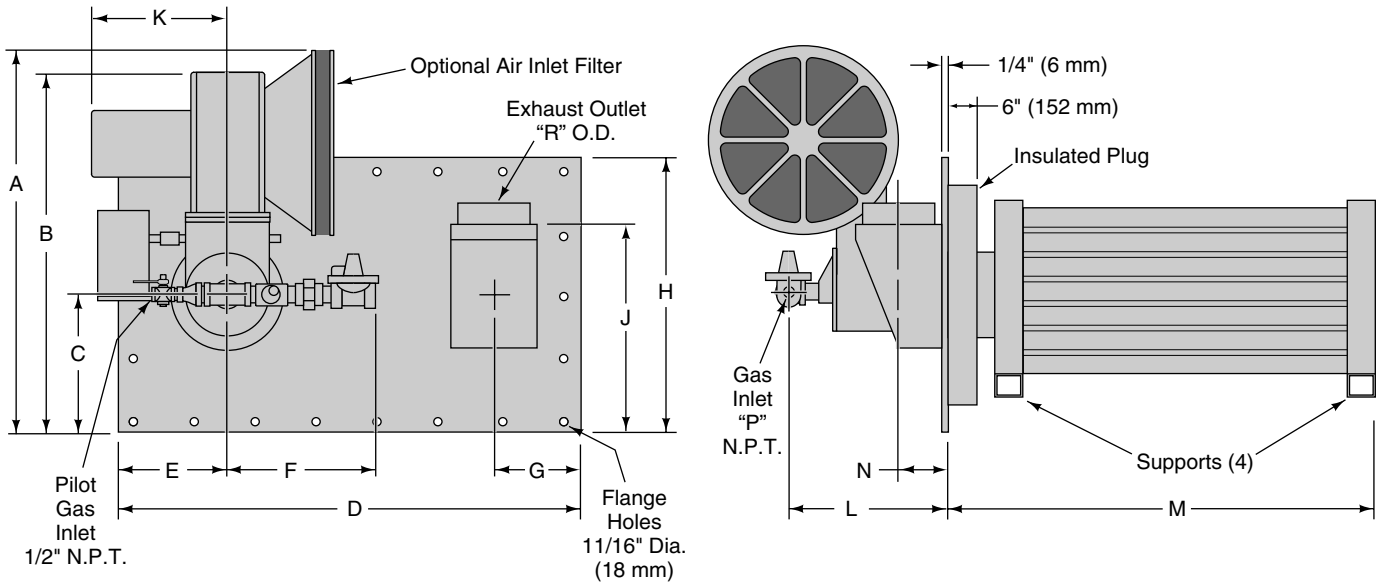


ECLIPSE "RHT" INDIRECT AIR HEATING BURNER

Data 120-2

4/00

Dimensions are subject to change without notice. Contact Eclipse for certified prints prior to fabrication or installation.



Units can be supplied with blower and exhaust positions reversed from those shown.

Dimensions, Inches

Model	A	B	C	D	E	F	G	H	J	K	L	M	N	P	R	Net Weight (Lbs.)
50 RHT	36.09	35.02	13.58	46.85	9.84	15.56	8.31	25.59	19.49	12.81	14.24	32.09	8.31	1	7.09	525
100 RHT	36.09	35.02	13.58	46.85	9.84	15.56	8.31	25.59	19.49	12.81	14.24	43.30	8.31	1	7.09	547
200 RHT	39.15	38.08	16.54	50.39	11.81	15.56	10.04	30.91	25.79	12.81	14.24	50.00	8.50	1	7.09	701
300 RHT	42.30	42.23	19.69	61.02	15.75	15.56	13.97	39.37	27.95	13.31	14.24	52.56	7.72	1	9.13	1087
400 RHT	51.00	49.93	23.62	70.87	19.29	20.56	13.59	47.24	34.65	13.38	18.43	63.78	8.11	1-1/2	10.24	1329
500 RHT	51.00	49.93	23.62	70.87	19.29	20.56	13.59	47.24	34.65	13.38	18.43	74.80	8.11	1-1/2	10.24	1429
600 RHT	51.00	49.93	23.62	70.87	19.29	20.56	13.59	47.24	34.65	14.38	18.43	86.60	8.11	1-1/2	12.20	1605
700 RHT																Contact Eclipse for details
800 RHT																Contact Eclipse for details

Dimensions, Millimeters

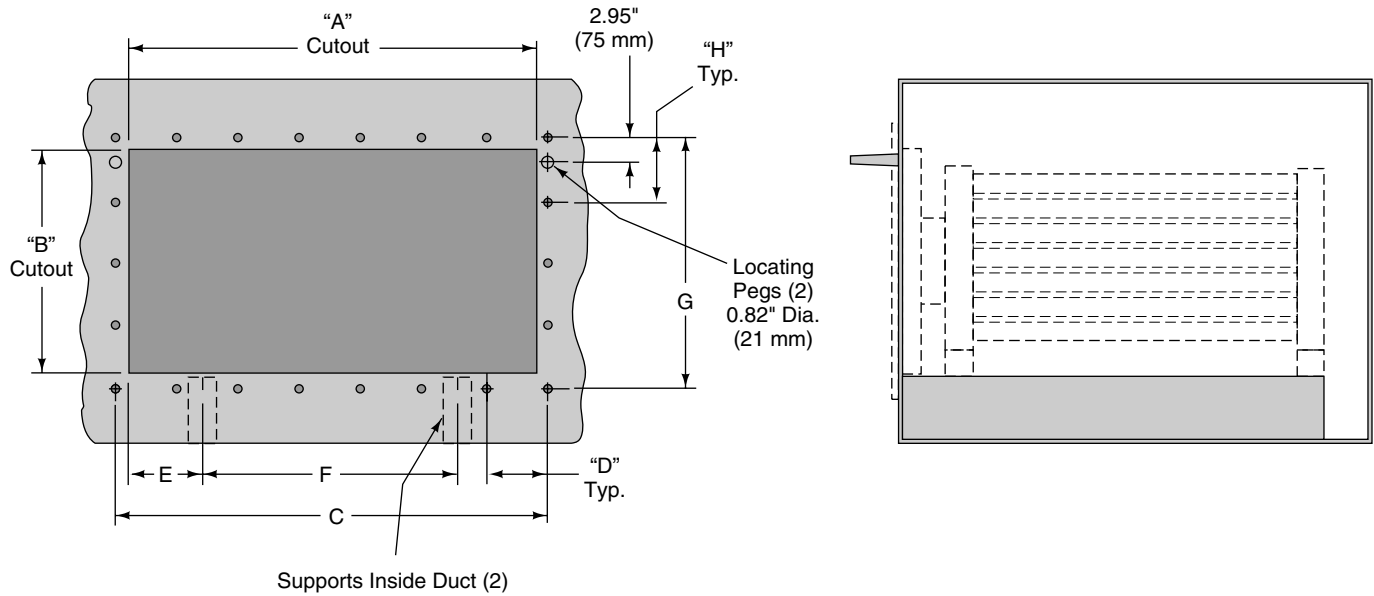
Model	A	B	C	D	E	F	G	H	J	K	L	M	N	P	R	Net Weight (Kgs.)
50 RHT	917	890	345	1190	250	395	211	650	495	325	362	815	211	1	180	238
100 RHT	917	890	345	1190	250	395	211	650	495	325	362	1100	211	1	180	248
200 RHT	994	967	420	1280	300	395	255	785	655	325	362	1270	216	1	180	318
300 RHT	1074	1073	500	1550	400	395	355	1000	710	338	362	1335	196	1	232	493
400 RHT	1295	1268	600	1800	490	522	345	1200	880	340	468	1620	206	1-1/2	260	603
500 RHT	1295	1268	600	1800	490	522	345	1200	880	340	468	1900	206	1-1/2	260	648
600 RHT	1295	1268	600	1800	490	522	345	1200	880	365	468	2200	206	1-1/2	310	728
700 RHT																Contact Eclipse for details
800 RHT																Contact Eclipse for details



Eclipse Combustion

RHT Sideplate Mounting Flange Dimensions

Dimensions are subject to change without notice. Contact Eclipse for certified prints prior to fabrication or installation.



Dimensions shown are for unit configured for left-to-right air flow; right-to-left unit is reverse of unit shown.

Dimensions, Inches

Model	A	B	C	D	E	F	G	H
50 RHT	43.30	22.24	44.88	8.98	8.07	26.97	23.62	5.91
100 RHT	43.30	22.24	44.88	8.98	8.07	26.97	23.62	5.91
200 RHT	44.41	26.38	46.54	7.76	10.98	26.97	28.94	9.65
300 RHT	57.09	35.83	59.06	5.91	10.83	31.10	37.40	7.48
400 RHT	65.35	43.70	68.90	9.84	20.70	27.56	45.28	9.06
500 RHT	65.35	43.70	68.90	9.84	20.70	27.56	45.28	9.06
600 RHT	65.35	43.70	68.90	9.84	20.70	27.56	45.28	9.06
700 RHT	Contact Eclipse for details							
800 RHT	Contact Eclipse for details							

Dimensions, Millimeters

Model	A	B	C	D	E	F	G	H
50 RHT	1100	565	1140	228	205	685	600	150
100 RHT	1100	565	1140	228	205	685	600	150
200 RHT	1128	670	1182	197	279	685	735	244
300 RHT	1450	910	1500	150	275	790	950	190
400 RHT	1660	1110	1750	250	525	700	1150	230
500 RHT	1660	1110	1750	250	525	700	1150	230
600 RHT	1660	1110	1750	250	525	700	1150	230
700 RHT	Contact Eclipse for details							
800 RHT	Contact Eclipse for details							



Offered By:

Power Equipment Company
2011 Williamsburg Road
Richmond, Virginia 23231
Phone (804) 236-3800
Fax (804) 236-3882

www.peconet.com